

A new species of genus *Tegenaria* Latreille, 1804 (Araneae: Agelenidae) from Korea

Kim, Joo-Pil

(Department of Applied Biology, Dongguk Univ., & The Arachnological Institute of Korea)

韓國產 집가게거미屬(*Tegenaria*)의 1新種

金 甫 弼

(東國大學校 應用生物學科 韓國거미研究所)

ABSTRACT

So far, two species, *T. domestica*(Clerk, 1757), *T. secunda* Paik, 1971 have been reported from Korea. In the present paper, the author would like to describe a new species, *T. daiamsanensis* n. sp. The type of new species is deposited in the collection of the Arachnological Institute of Korea. Measurements are millimeter.

Key wores : Araneae, Agelenidae, *Tegenaria daiamsanensis* Korea

Description

Genus *Tegenaria* Latreille, 1804

Tegenaria daiamsanensis n. sp.

(Figs. 1-2)

Measurements

Female(holotype): Total body length 10.3; carapace length 4.99, width 3.37; abdomen length 5.31; width 3.36.

Description

Female(holotype): Carapace longer than the width in the index 67 and in head the index is

53: Dark brown, cephalica is bung and cervical groove, median furrow radial furrow are clear. AER is slightly recurve, PER is slightly procurve, in dorsal view.

Eye row ratio, AER<PER(35:43) Eye ratio, AME<PME=PLE<ALE(5:7:7:8), AME is the smallest, ALE is largest, MOQ is anterior margin<posterior margin, (13:17) and height<width (14:17).

Height of the clypeus is 2 times the diameter of AME, chelicera is dark brown, endite and labium are thick brown.

Sternum is brown and bulging in the center in addition bristles is close, palpal organ Legs are thick brown, each tibia in the ventral view of legs is 2-2-2 with spine.

Abdomen oval, dorsum yellow brown in back ground with dark brown cardiac pattern, epigynum is brown, large opening.

Male unknown.

Specimen examined: 1 ♀ (holotype), 14-VI-1987, Mt. Daiamsan, Chulwon-city, Kwangwon-do, by Paik, N.K.; 2 ♀♀ (allotype), 3-X-1997, by Kim, J.P.

Distribution: Korea (Chulwon).

Diagnosis: The new species resembles to *T. domestica* (Clerk, 1757), but differs in : 1. The latter's spermatheca elongated elliptic, anterior margin of epigynal septum as wide as posterior one; 2. down epigynum become like a funnel shape.

Etymology: The specific name derived from its type locality, Chulwon city (Mt. Daiamsan).

요 약

집가게거미屬 (*Tegenaria*)의 1新種을 記載 報告 하는 바이다. 가게거미科 (Agelenidae)의 집가게거미屬에 韓國産이 現在까지 2種이 報告되어있으나 이 新種의 追加로 다음 3種이 된다.

1. *Tegenaria domestica* (Clerk, 1757) 집가게거미

2. *T. secunda* Paik, 1971. 가야집가게거미

3. *T. daiamsanensis* n. sp. 대암산집가게거미 (신칭)

이들 중 *T. domestica*는 中國, 日本, 유구, 臺灣, 쿠릴열도 등 凡世界的인 共通種이고 *T. secunda*와 *T. daiamsanensis* n. sp는 韓國固有種이다.

검색어 : 거미목, 가게거미과, 대암산집가게거미, 한국

Reference

Kim, J. P., 1998. A list of Korean spiders, Korean

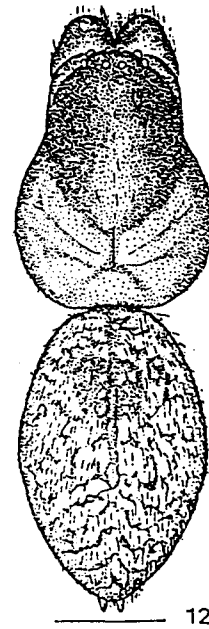
Arachnol., 14(1): 9-63.

Namkung, J., et al., 1988. Spiders from the Southern region of DMZ in Kangwon-do, Korea. Korean Arachnol. 4(1): 15-34.

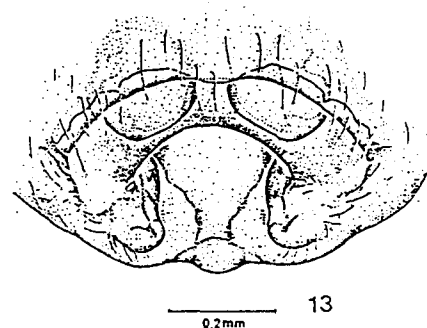
Paik, K.Y., 1976. Spiders and Myriapods fauna of Buryeung-sa district. Bull. Kor. Assoc. Conser. Na., (10): 82-90.

Yaginuma, T., 1986. Spiders of Japan in color. (new ed.) pp.i-xxiv+1-305, pls.1-64, 608figs., Text-figs.1-135. Osaka, Hoikusha.

<1998년 1월 25일 접수>



1. Female, total body, dorsal view.



2. Epigynum, ventral view.